

Standard Operational Procedure



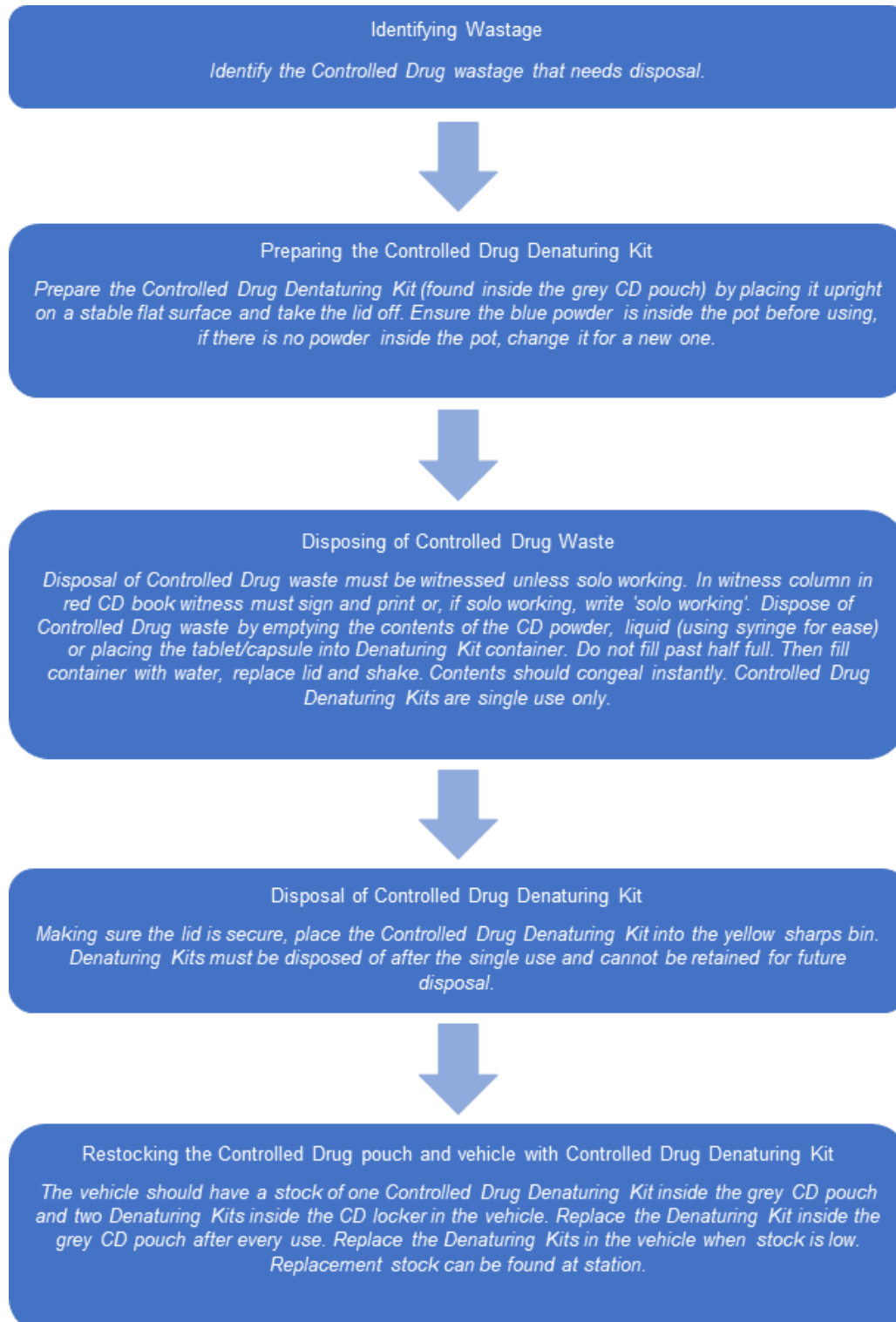
Title:	Disposal of Controlled Drug Waste on Scene
SOP reference:	MMSOP 05
Version number:	1
Owners:	Medicines Management Team
Approved by:	Medicines management Group
Date issued:	1/08/23
Review date:	31/07/26
Applicable to:	All HCPC, GPHC & NMC staff
Distribution:	
Linked documents:	Medicines Management Policy

Equality Impact Assessment

The East of England Ambulance Service NHS Trust has made every effort to ensure this policy does not have the effect of discriminating, directly or indirectly, against employees, patients, contractors or visitors on the grounds of race, colour, age, nationality, ethnic (or national) origin, gender, sexual orientation, marital status, religious belief or disability. This policy will apply equally to full and part time employees. All East of England Ambulance Service NHS Trust policies can be provided in large print or Braille formats if requested, and language line interpreter services are available to individuals who require them.



1.0 Process for Disposal of Controlled Drugs Waste on Scene





2.0 Statement

The purpose of the Controlled Drug Denaturing Kits is to ensure that Controlled Drug wastage is disposed of in a safe manner, ensuring once the drugs have been placed in the pots, they cannot be accessed in their natural state.

3.0 Identifying Wastage

Wastage in relation to Controlled Drugs is considered to be surplus/excess medication which will not be administered to the patient and is therefore not required and in need of disposal. For example, a drawn up or opened ampule containing a controlled drug in a liquid form, or a tablet form drug which has a punctured packet and is no longer useable.

Sharps left from drawing up or administering controlled drugs should be disposed of in a yellow sharps bin, not placed within the Controlled Drug Denaturing Kit as per Trust protocol.

Empty packets from tablet-form controlled drugs should be disposed of in the contaminated waste bin, not placed within the Controlled Drug Denaturing Kit.

4.0 Preparing the Controlled Drug Denaturing Kit

The Controlled Drug Denaturing Kit can be found inside the grey Controlled Drug pouch, where it is possible with two spare Denaturing Kits stored inside the Controlled Drug locker in the vehicle. The Denaturing Kit is a clear plastic tube which contains blue powder, which will turn into a gel once liquid has been added. To ensure the Controlled Drugs can be disposed of it is essential the blue powder is in the pot, if there is no powder, you will need to use another pot. Place Denaturing Kit upright on a flat stable surface and take off the lid.

5.0 Disposing of Controlled Drug Waste

Disposing of Controlled Drug waste must be witnessed unless solo working. In the red Controlled Drug book witness column, the witness must sign and print their name or, if solo working, write 'solo working'. The red Controlled Drug book can be found inside the grey Controlled Drug pouch.



- 5.1** Liquid/Powder: empty contents of powder packet, syringe or ampule into Denaturing Kit. If there is remaining liquid in the ampule, first draw this up into a syringe for easier disposal and then empty the contents into the Denaturing Kit. Dispose of the syringe into the controlled waste bin and any sharps into the yellow sharps bin.
- 5.2** Tablet/Capsule: place tablets/capsules inside Denaturing Kit. Once the Controlled Drug waste is placed inside the Denaturing Kit, fill the pot to capacity with water, replace the lid securely and shake. The contents will congeal instantly and form a gel encasing the Controlled Drug waste. The Controlled Drug Denaturing Kit is single use only. Do not use Water for Injection for disposal as this is a separate drug that needs to be signed out. Instead, use the water available on the ambulance, or if at hospital, tap water can be utilised. However, disposal must be done inside the ambulance, not inside the hospital to prevent contamination.

6.0 Disposal of Controlled Drug Denaturing Kit

Once the Denaturing Kit is full and has been closed securely, place into the large yellow sharps bin found on a standard Double Staffed Ambulance. If on an RRV, you will need to; utilise a crews large yellow sharps bin where possible, return to station for disposal or lock the used Controlled Drug Denaturing Kit in the Controlled Drug locker until the earliest opportunity to dispose of it. This must be done by the end of your shift and must not be left on the vehicle. The Controlled Drug Denaturing Kit must be disposed of after a single use and cannot be retained for future disposal. Please ensure the lid for the Denaturing Kit is securely sealed to avoid leakage inside the yellow sharps bin.



7.0 Restocking the Controlled Drug pouch and vehicle with Controlled Drug Denaturing Kit

Replace the used Controlled Drug Denaturing Kit from the grey Controlled Drug pouch with one of the spare Kits found inside the Controlled Drug locker. There must be a Denaturing Kit available inside the Controlled Drug pouch at all times. Once all Kits have been used from the vehicle or if you have returned to station prior to this, restock the Kits to have one inside the grey Controlled Drug pouch where possible and two inside the Controlled Drug locker. Total stock is three and should not go below one.

8.0 Appendix

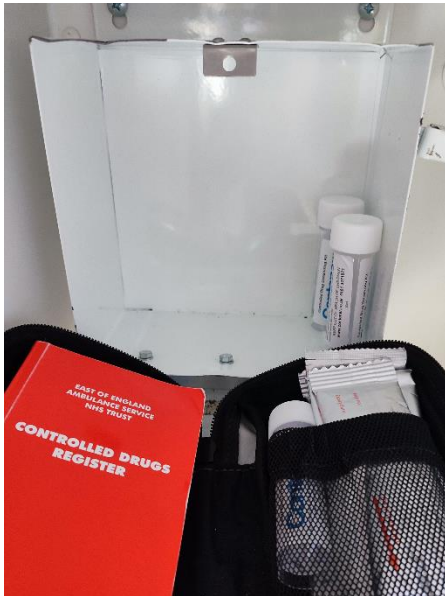
8.1 Fig. 1 Controlled Drug Denaturing Kit



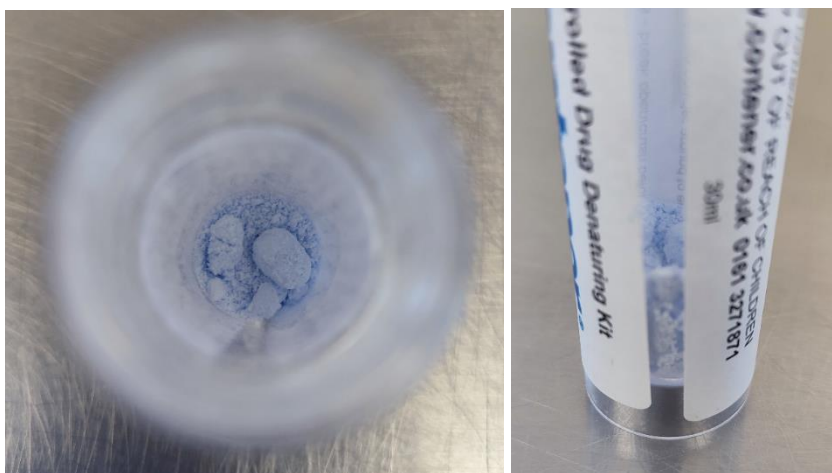
8.2 Fig. 2 Images of where Controlled Drug Denaturing Kit will be found on standard Double Staffed Ambulance and inside grey Controlled Drug pouch where possible.



Standard Operational Procedure

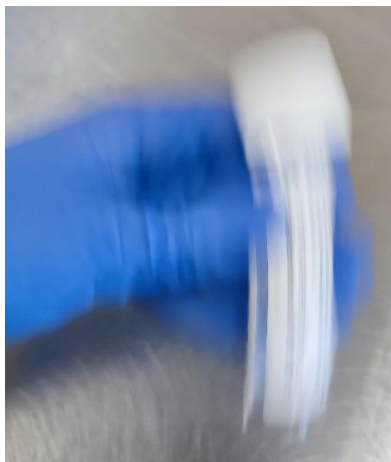
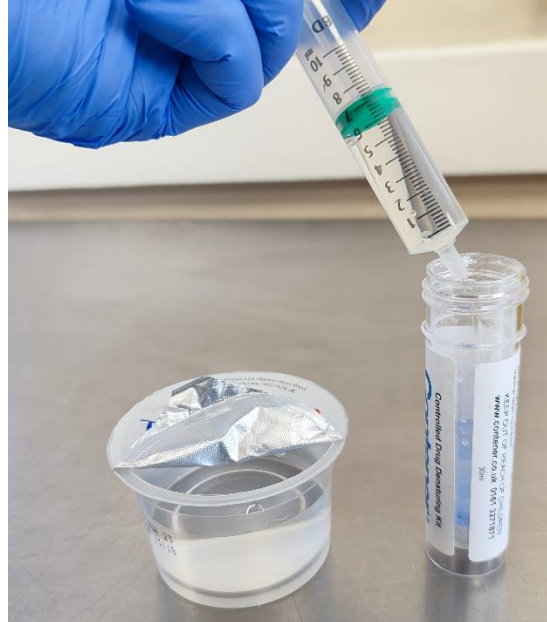


8.3 Fig. 3a - 3b Examples of the blue powder inside the Controlled Drug Denaturing Kit



8.4 Fig. 4a - 4i Images of Directions for Disposing of Controlled Drug waste into the Controlled Drugs Denaturing Kit

Standard Operational Procedure



8.5 Fig. 5a - 5b Example images of Controlled Drug Denaturing Kit container disposal

Standard Operational Procedure







8.6 Fig. 6 Example of how to correctly fill out the red Controlled Drug book found within the grey Controlled Drug pouch

MORPHINE SULPHATE 10mg/1ml Inj											
AMOUNT RECEIVED						AMOUNT ADMINISTERED					
AMOUNT	DATE	BATCH NO'S	DATE	TIME	DOSE (IN mg)	BATCH NO	GIVEN BY SIGNATURE + PRINT	WITNESSED BY SIGNATURE + PRINT	STOCK BALANCE		
	04/23		1230	1234	2.5mg (7.5mg)	0142233 (09/25)	J.DOE	A.EAST	3		
	04/23		1845	4321	5mg (5mg)	0140102 (05/25)	J.BLOGGS	SOLO WORKING	2		

MORPHINE SULPHATE 10mg/1ml Inj											
AMOUNT RECEIVED						AMOUNT ADMINISTERED					
AMOUNT	DATE	BATCH NO'S	DATE	TIME	CAD NUMBER	AMOUNT GIVEN (WASTE)	BATCH NO	GIVEN BY SIGNATURE + PRINT	WITNESSED BY SIGNATURE + PRINT	STOCK BALANCE	
	04/23		1230	1234		2.5mg (7.5mg)	0142233 (09/25)	J.DOE	A.EAST	3	
	04/23		1845	4321		5mg (5mg)	0140102 (05/25)	J.BLOGGS	SOLO WORKING	2	



8.7 Fig. 7 Example of Quick Reference Guide signage document for email and vehicles

Disposal of Controlled Drug Waste in Controlled Drug Denaturing Kit	
<p>Stock Levels: Total 3: 1 Controlled Drug Denaturing Kit inside grey CD pouch 2 Controlled Drug Denaturing Kits inside CD locker</p> <p>Inside the grey CD pouch and CD locker you will find Controlled Drug Denaturing Kits. These must be used for any Controlled Drug wastage and are single use only.</p>	
Steps for Denaturing CDs:	
1	 <p>Make sure the Denaturing Kit contains blue powder. If there is no blue powder, you will need to use a new KIT.</p>
2	 <p>CD Liquid/Powder: empty contents into Denaturing Kit. CD Tablet/Capsule: place tablet/capsule into Denaturing Kit.</p> <p>Do not fill container more than halfway with Controlled Drugs. Then fill container with water and shake well. Contents should congeal instantly. Controlled Drug Denaturing Kit is single use only and must be disposed of after use. Do not reuse, do not retain for future disposal.</p> <p>Disposal of Controlled Drugs must be witnessed unless solo working. Witness must sign and print or, if solo working, write 'solo working' in the witness column in the red Controlled Drug book.</p>
3	 <p>Secure the lid and place Controlled Drug Denaturing Kit into yellow sharps bin.</p>
4	 <p>Replace Denaturing kit in grey CD pouch with one from the cupboard. When stock of Denaturing Kit is running low, restock from station. Total stock should not get below 1.</p>

8.8 Fig. 8a - 8c Images of where signage will be placed in standard Double Staffed Ambulance

Standard Operational Procedure

